

Press Release Statement - New service

“CALIFORNIA’S PREMIER PANELIZED KIT HOME MANUFACTURER”

U.S. PANELIZED PACKAGE HOUSE FROM CALIFORNIA !

NEW SERVICE SPECIALLY FOR FOREIGNERS RESIDING IN JAPAN FM JULY 1ST 2024

- * Direct export to Japan construction jobsite from U.S. panelized package home manufacturer
- * Original 38 model plans from 600 sq.ft. to 4482sq.ft . except garage space
- * Panelized exterior walls by 2X6, installed vinyl pair glass windows and prefabricated roof truss
- * 2X4 framed interior walls with rough opening for interior doors
- * Ex factory price at Calif. Factory from usd41163 to usd281629

We specialize in helping individuals build their own kit home, barn or garage; faster and better while at the same time saving money.

Pre-Engineered Kit Home Plans

We offer a large selection of Pre-Engineered custom kit homes from which to choose. These kit homes appeal to a wide range of design styles and sizes. Since our kit homes are computer designed, this gives us the flexibility to change almost any design to meet your individual preferences. If you don't see the kit home you're looking for, you can create your own design.

Panelized Kit Homes

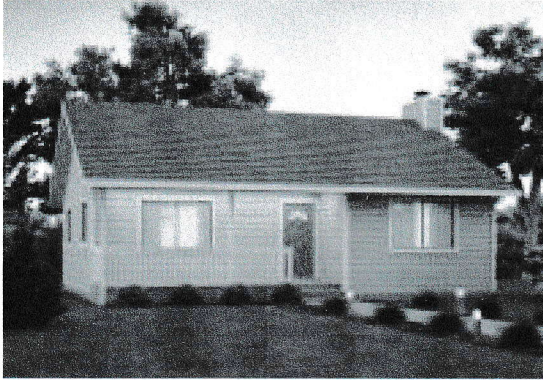
Our Panelized Kit Homes will help you build your new home faster, better and at the same time saving money. Our Panelized Building Kits include high quality pre-framed and numbered walls sections and roof trusses. Then we provide a diagram that shows where these numbered sections are placed on the foundation and roof system. To further speed the construction process, we factory install the windows and wall sheathing. Our goal is to provide you with a building system that is of the highest quality and the fastest to build.

Plan Your Dream Home

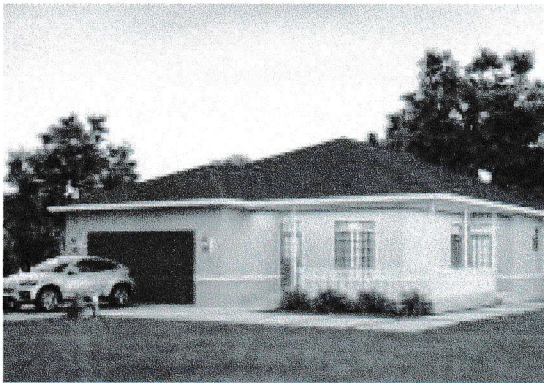
We Make It Simple

The first step toward building your dream home is deciding which design meets your desires and budget. You can choose from our existing designs below or look at our Full Price List. We can modify any of our existing designs. Or, we can help you create your own design. If you choose one of our existing designs the next step is to request the free plan review set for the design you've selected. After you've decided which way you'd like to go, your JAPAN REP can help you with anticipated building costs

A: 1 Story Homes 600-2,000ft² (55.5m²-185.1m²)



B: 1 Story Homes 2,000-4,500ft² (185.1m²-416.6m²)



C: 2 Story Homes 1,600-3,500ft² (148.1m²-324.0m²)



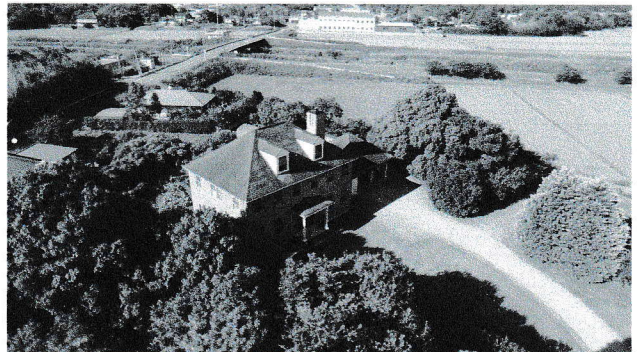
If you have your own plan ideas we can help you create your own design.

Do You Want To "Age-In-Place"?

'Age-in-Place' is one of the terms used to describe one's desire to live in their home as long as they want.

We also can supply u.s. building materials you specially need such as "Kitchen Cabinet", "Exterior door and Interior door", "Molding", "Garage Door", "Exterior Siding", "Roof Shingle", "Flooring" etc.

Construction Sample Pictures and YouTube Video :



<https://www.youtube.com/watch?v=GkIZ9ikYY68>

< INQUIRY >

Pacific Modern Homes, Inc. As Japan Rep.
American Resort Home, inc.
28-9, Hirohakama 3-Chome, Machida-City, Tokyo, 195-0056, Japan
Tamotsu Kitagawa
Managing Architect
090-6526 4861
Fax: 042-708-0499
E-Mail: info@pmhi.jp
URL: <http://www.pmhi.jp>
<https://pmhi.com>